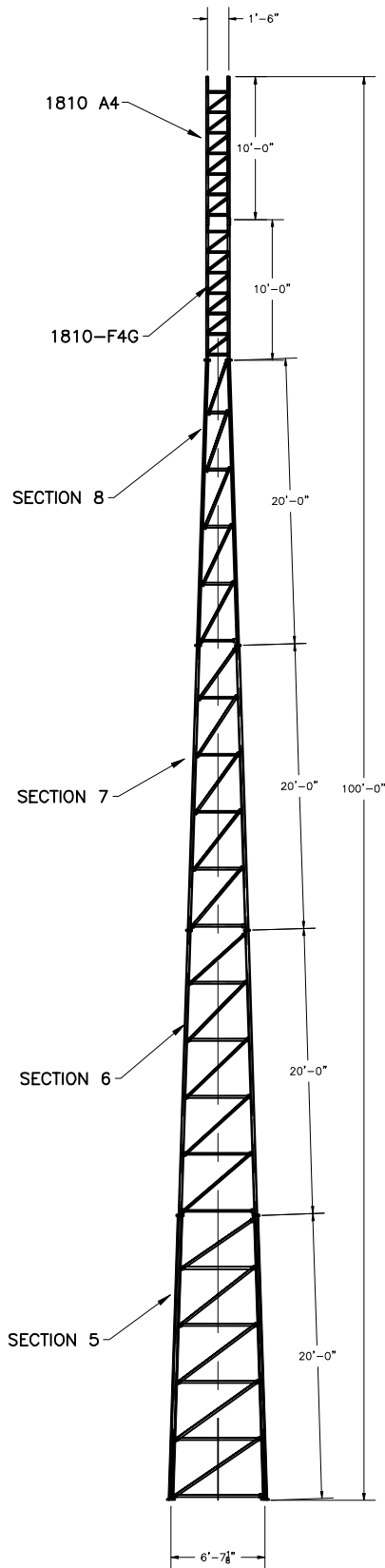


| ASTM         |                              | *                    |                      |
|--------------|------------------------------|----------------------|----------------------|
| LEGS         | 2.875" x 0.203"              | 2.375" x 0.218"      | 1.9" x 0.145"        |
| DIAGONALS    | L2 x 2 x 1/8                 | L1 3/4 x 1 3/4 x 1/8 | L1 1/2 x 1 1/2 x 1/8 |
| GIRTS        | L2 x 2 x 1/8                 | L1 3/4 x 1 3/4 x 1/8 | L1 1/4 x 1 1/4 x 1/8 |
| BRACE BOLTS  | (4)-5/8"φ                    | (1)-5/8"φ            | (2)-1/2"φ            |
| SPLICE BOLTS | (4)-1"φ (C1018 THREADED ROD) | (4)-5/8"φ            | (4)-1/2"φ            |
| ANCHOR BOLTS | (4)-1"φ (C1018 THREADED ROD) | (1)-5/8"φ            | (2)-1/2"φ            |
|              |                              |                      | GRADE 5              |

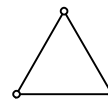


According to ANSI/EIA-222-F 1996

| 90 mph/78 mph + 1/2" radial ice w/ (3 second gust) per OBC AND IBC |            |                 |          |                 |
|--|------------|-----------------|----------|-----------------|
|  | CaAa       | Flat Plate Area | Weight   | Elevation       |
| No Ice   | 34.0 sq ft | 18.89 sq ft     | 800 lbs  | 100 ft          |
| 1/2" Ice   | 42.0 sq ft | 23.33 sq ft     | 1100 lbs | 100 ft          |
| No Ice   | 59.0 sq ft | 32.78 sq ft     | 750 lbs  | 100 ft to 70 ft |
| 1/2" Ice   | 71.5 sq ft | 39.72 sq ft     | 1300 lbs | 100 ft to 70 ft |
| (1)-7/8" coax Elevation 0 ft to 100 ft                             |            |                 |          |                 |
| Climbing Ladder Elevation 0 ft to 80 ft                            |            |                 |          |                 |

| 70 mph/61 mph + 1/2" radial ice (Fastest MPH) per EIA-222-F |            |                 |          |                 |
|---|------------|-----------------|----------|-----------------|
|   | CaAa       | Flat Plate Area | Weight   | Elevation       |
| No Ice  | 35.5 sq ft | 19.72 sq ft     | 800 lbs  | 100 ft          |
| 1/2" Ice  | 43.0 sq ft | 23.89 sq ft     | 1100 lbs | 100 ft          |
| No Ice  | 62.0 sq ft | 34.44 sq ft     | 750 lbs  | 100 ft to 70 ft |
| 1/2" Ice  | 74.5 sq ft | 41.39 sq ft     | 1300 lbs | 100 ft to 70 ft |
| (1)-7/8" coax Elevation 0 ft to 100 ft                      |            |                 |          |                 |
| Climbing Ladder Elevation 0 ft to 80 ft                     |            |                 |          |                 |

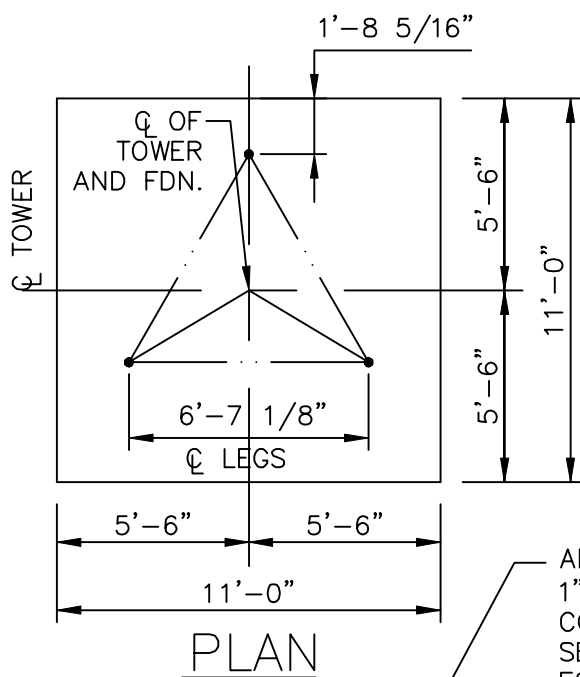
\* PIPE LEGS 42 KSI MIN YIELD  
10 GA TUBE LEGS 30 KSI MIN YIELD



INTERIOR BRACING  
- NOT REQUIRED -

FOUNDATION REACTIONS  
TOTAL MOMENT: 226 FT-KIPS  
TOTAL SHEAR: 4 KIPS  
TOTAL DOWNLOAD: 6 KIPS

|                                |                |
|--------------------------------|----------------|
| AMERICAN TOWER COMPANY         |                |
| ISO 9001-2000                  |                |
| P.O. Box 29 Shelby, Ohio 44875 |                |
| www.amertower.com              |                |
| info@amertower.com             |                |
| Telephone                      | Fax            |
| (419) 347-1185                 | (419) 347-1654 |
| Since 1953                     |                |
| 100' STANDARD                  |                |
| BY: DOW                        | DATE: 12/21/02 |
| DWG NO. 1061                   |                |

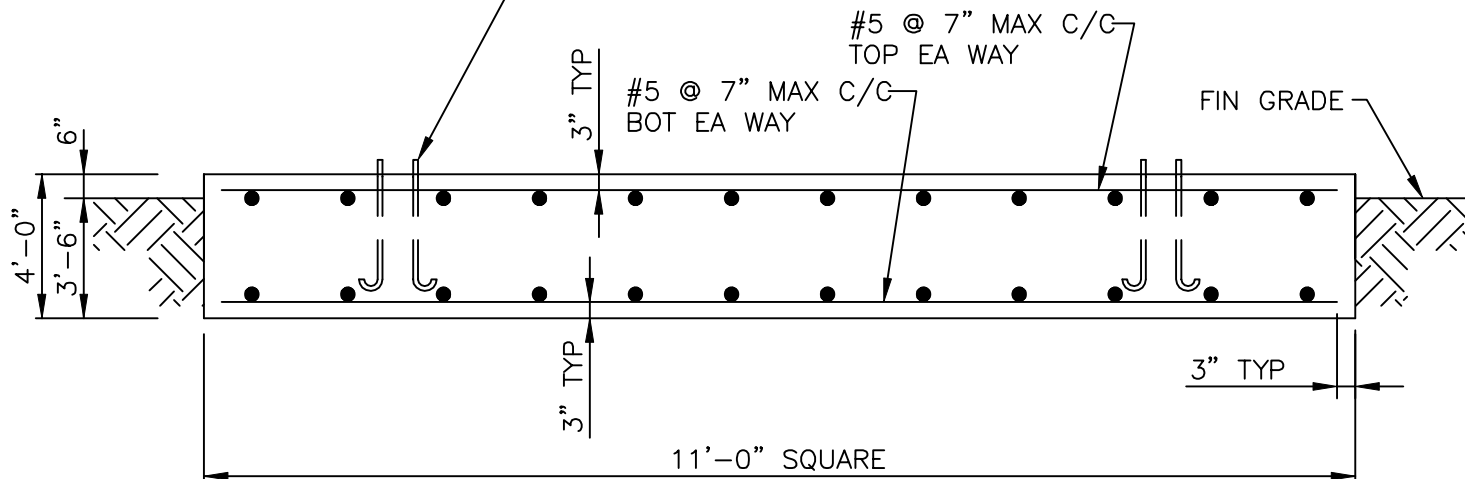


NOTES:

1. ALL CONCRETE SHALL HAVE A MINIMUM COMPRESSIVE STRENGTH OF 3000 PSI @ 28 DAYS.
2. REINFORCING STEEL SHALL CONFORM TO THE REQUIREMENTS OF ASTM A615 (GRADE 60).
3. TOTAL CONCRETE = 18 CUBIC YARDS.
4. FOUNDATION DESIGN BASED UPON ASSUMED SOIL PARAMETERS AS FOLLOWS:

ALLOW BEARING PRESSURE: 2000 PSF  
 UNIT SOIL WEIGHT: 100 PCF  
 WATER AND ROCK LOCATED BELOW FOOTING

ANCHOR BOLTS BY AMERICAN TOWER,  
 1"Ø x 3'-6" MIN EMBEDMENT INTO  
 CONCRETE. 180° END HOOK PER ACI.  
 SEE DRAWINGS BY AMERICAN TOWER  
 FOR ANCHOR BOLT ORIENTATION.



FOOTING MUST BEAR ON  
 UNDISTURBED SOIL OR  
 COMPACTED BACKFILL.

**AMERICAN TOWER COMPANY**  
 ISO 9001-2000  
 P.O. Box 29 Shelby, Ohio 44875  
 www.amertower.com  
 info@amertower.com

Telephone (419)347-1185      Since 1953      Fax (419) 347-1654

---

100' STANDARD FOUNDATION

---

BY: DOW      DATE: 12/21/02

---

DWG NO. 1061 A